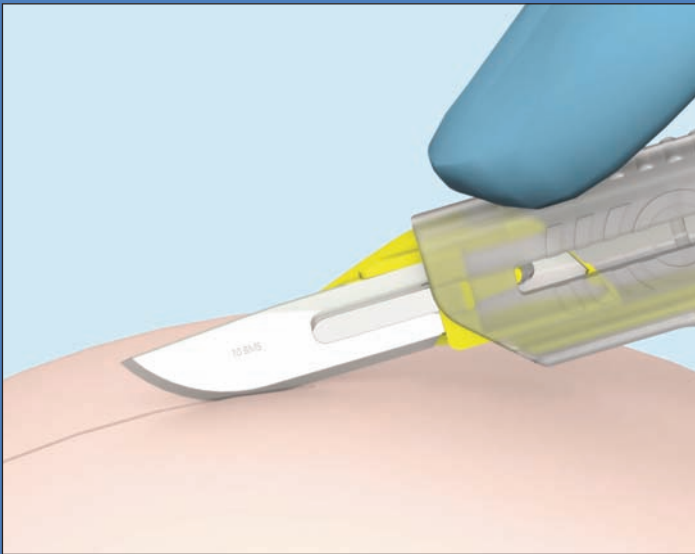


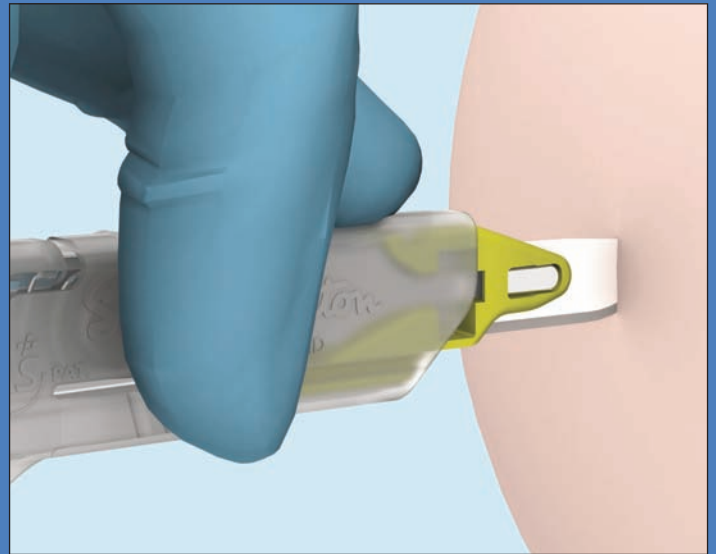
SAFE Features a protective sliding sheath which covers the surgical blade completely, assisting accident free handling

KLEEN Sheath fully exposes the surgical blade when in use with intuitive lock which prevents any forward movement of the sheath during procedures

EASY Easy to detach BMS which contains the blade for safe disposal



The BMS used to perform surgery in the normal manner.



Sheath locks firmly in place to allow stab incisions.



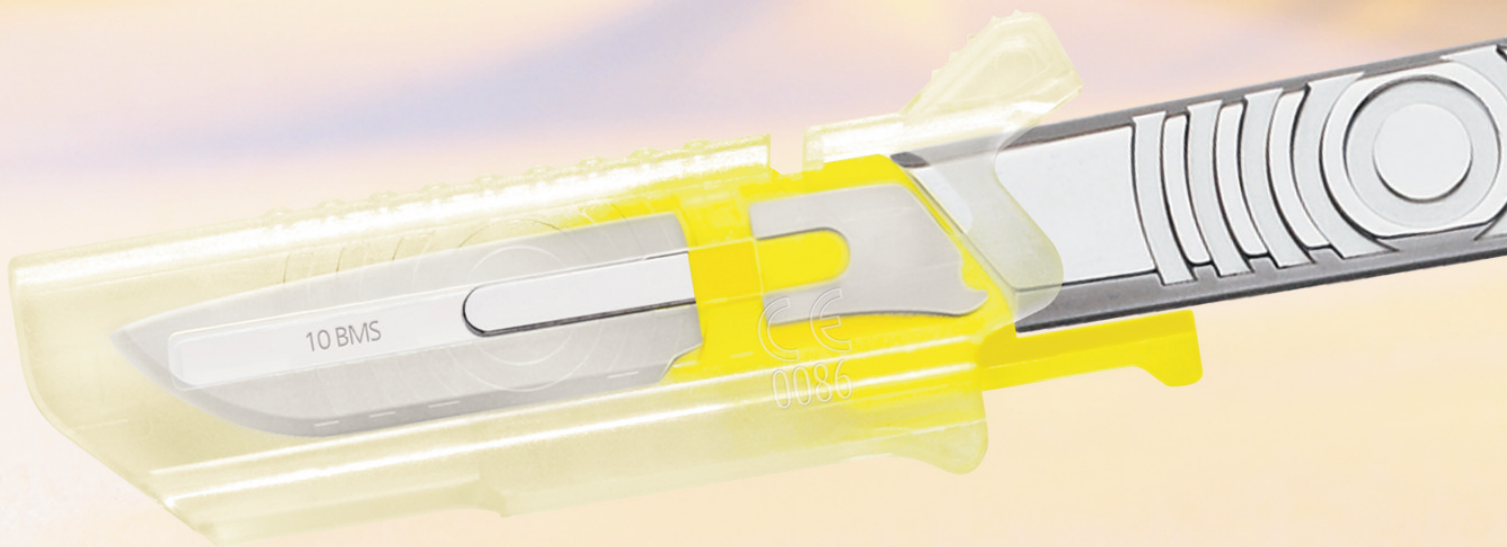
Scan this code for more product information

Swann-Morton and the 'ring pattern' logo are registered trademarks of Swann-Morton Limited and related companies. The products shown are manufactured for use by trained health care professionals and can cause injury if used or handled incorrectly. The information and illustrations used in connection with the products shown on this leaflet are for general guidance only and users must seek proper training and instruction in their use before using or handling such products. Swann-Morton Limited exclude all liability for injury to the extent permitted by law.

Swann-Morton[®]
Sheffield - England

Swann-Morton Ltd. Penn Works, Owlerton Green, Sheffield S6 2BJ
Telephone: 0114 2344231, Sales 0114 2344223, Fax: 0114 2314966
uksales@swann-morton.com, exportsales@swann-morton.com
orders@swann-morton.com, www.swann-morton.com

Safe, **KLEEN**
and easy to
use



The all-in-one Blade
Management System by

Swann-Morton®

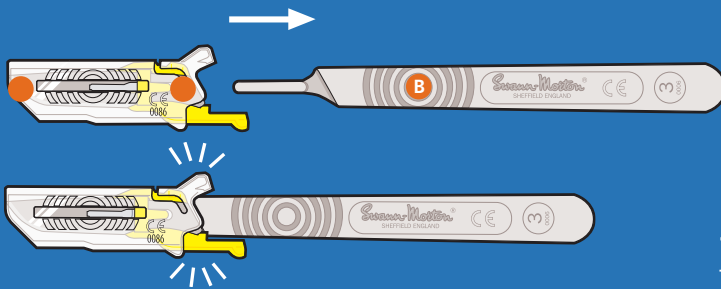
The KLEEN Blade Management System .BMS compliments the existing range of safety products available from Swann-Morton in their efforts to support safe passing protocols and sharps in ury reduction amongst ealth are Workers.

The system which incorporates a 1uality Swann-Morton surgical blade is designed to operate with most No 3 and No 4 standard surgical handles already in circulation within the hospital system thus minimising disruption and cost during the conversion process.

The system comprises of two injection moulded parts which encapsulates a standard surgical blade and protects surgical staff from sustaining a potential sharps injury whilst attaching or removing the surgical blade from a handle.

Attaching the BMS

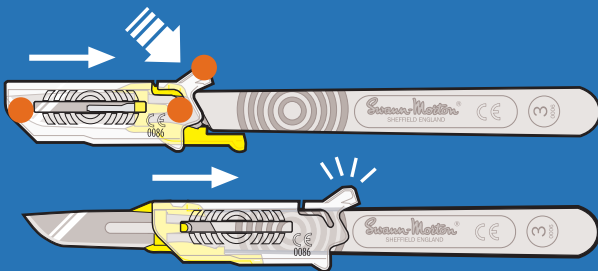
1 The BMS system is attached to the handle **B** by inserting the handle into the rear of the sheath and engaging with the slot in the blade as is current normal practice. As with all standard blades and handles a certain amount of care must be taken to ensure the fitment is correctly achieved²in this case however the user is completely protected from the cutting edge of the blade during the process.



2 An audible /click/ will be heard when the blade is correctly attached. Fitment can also be checked visually prior to use.

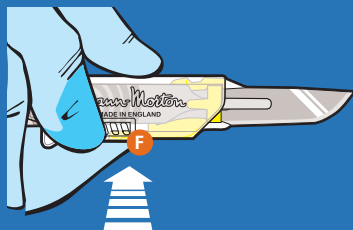
Exposing the blade

3 To reveal the blade sheath can be retracted by releasing retaining catch and whilst simply applying pressure slide the sheath backwards.



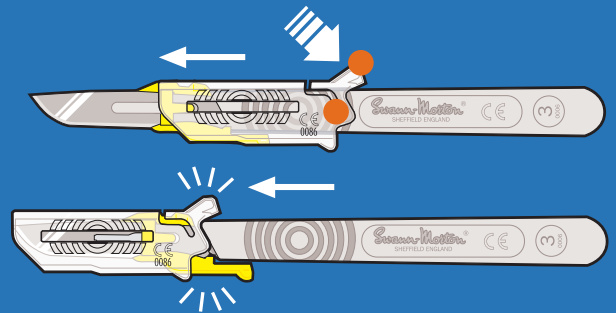
4 A further audible /click/ will provide confirmation that the sheath is fully retracted.

5 In this open position surgery can now be performed in the normal manner. However during procedures where the surgeon needs to apply a little more longitudinal pressure than usual for example when making a stab incision the sheath can be firmly locked open by pressing lightly on the tab **F** in lower side area of the sheath.



Closing the sheath and covering the blade

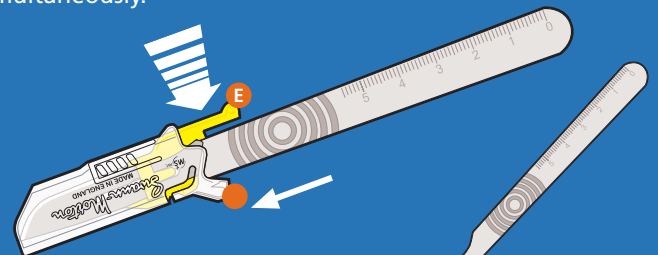
6 To safely cover the blade the sheath can be returned to the closed position by releasing the retaining catch in the same way as before and sliding the sheath forwards.



7 As before an audible /click/ will provide confirmation that the sheath is fully closed. This can be repeated throughout the procedure to ensure safe passing of the scalpel between members of the surgical team.

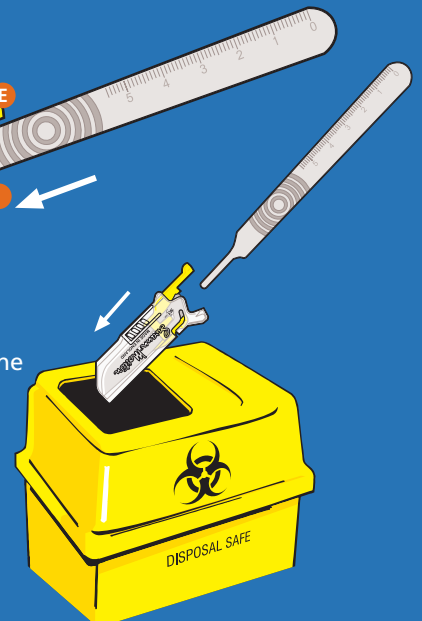
Detaching the BMS

8 Once the sheath is closed and on conclusion of the procedure the BMS may be safely removed from the scalpel handle. Hold scalpel in right hand with blade pointing downwards and away from your body and with the sharp edge facing to the right. With thumb on sheath clip and fore-finger on blade-removing lever **E** push down and forwards simultaneously.



Sharps disposal

9 Using firm pressure the BMS will be removed from the handle by sliding it away and can be safely disposed of in an appropriate sharps container.



step forward in the evolution of safe scalpel use.

The BMS allows for the effortless and safe attachment of standard surgical blades

Features a protective sliding sheath which covers the surgical blade completely, assisting accident free handling

Sheath fully exposes the surgical blade when in use with intuitive lock which prevents any forward movement of the sheath during procedures

Easy to detach BMS which contains the blade for safe disposal

Product	Product No	nit		Product	Product No	nit
---------	------------	-----	--	---------	------------	-----

KLEEN BMS - Sterile
 Individually sealed in a paper film pack, sterilised and boxed in units of 50

Fits No 3 handle

10	401	} Boxed in 50's
11	403	
1	40	
11P	491	
1 T	492	

Fits No 4 handle

20	406	} Boxed in 50's
21	404	
22	40	
23	410	
24	411	

Product	Product No	nit		Product	Product No	nit
---------	------------	-----	--	---------	------------	-----

KLEEN BMS - Bulk Non Sterile
 10 bags of 50 per outer box of 500

Fits No 3 handle

10	601	} Boxed in 500's
11	603	
1	60	
11P	691	
1 T	692	

Fits No 4 handle

20	606	} Boxed in 500's
21	604	
22	60	
23	610	
24	611	

