

# AIRGARD<sup>®</sup> AIRFLOW MONITORS MODELS 315-BSC AND 350-CEM

## **Alnor<sup>®</sup> AirGard<sup>®</sup> Flow Monitor Model 315-BSC**

The Alnor<sup>®</sup> AirGard<sup>®</sup> Flow Monitor Model 315-BSC is a simple, go/no-go monitor for critical airflows including the downflow of a bio-safety cabinet. By warning of poor bio-safety cabinet performance, the 315-BSC can increase staff protection while reducing experiment contamination.

## **Alnor<sup>®</sup> AirGard<sup>®</sup> Model Air Flow Monitor 350-CEM**

The Alnor<sup>®</sup> AirGard<sup>®</sup> Model Air Flow Monitor 350-CEM goes a step beyond the Model 315-BSC. Its large LED and digital display of measured velocity give unrivaled information to users, making this monitor a powerful diagnostic tool.

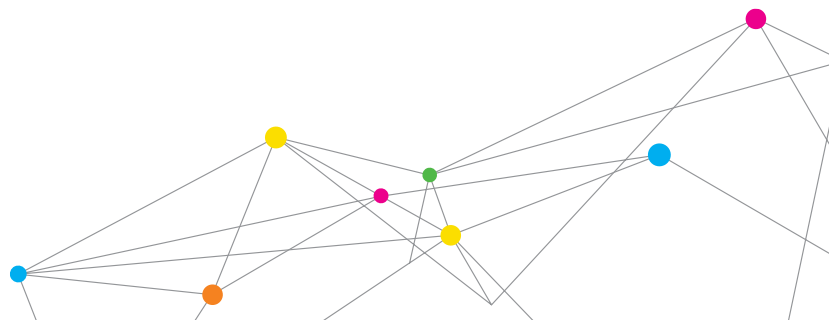


## **Features and Benefits (Both Models)**

- + Range 25-2,000 fpm (0.127-10.16 m/s)
- + Accuracy  $\pm 5\%$  of set point
- + Visual display jumbo green, yellow, and red LEDs
- + Alarm indications jumbo red LED, audible alarm, relay output
- + Input power 9-30 V AC/DC
- + Mounting flush or kit
- + Agency listings CE
- + Velocity readings taken by remote probe inserted in air flow stream

## **Features and Benefits (Model 350-CEM)**

- + Accuracy  $\pm 5\%$  of reading or 5 fpm, whichever is greater
- + Visual digital display bar graph with green, yellow, and red zones; jumbo green, yellow, and red LEDs



## SPECIFICATIONS

### AIRGARD® AIR FLOW MONITORS MODELS 350-CEM AND 315-BSC

	AirGard 350-CEM	AirGard 315-BSC
Bar graph display range	25-2,000 fpm (0.13-10.2 m/s)	n/a
Alarm range	25-2,000 fpm (0.13-10.2 m/s)	25-2,000 fpm (0.13-10.2 m/s)
Alarm delays	user configurable through menu	3 seconds
Relay output	NC, NO	NC, NO
Remote alarm acknowledge	yes	no
Units	selectable (English & Metric)	n/a
Display-visual	bar graph, red zone-alarm, yellow zone-marginal, green zone-normal, jumbo LEDs (digital LCD can be enabled)	jumbo green LED for normal jumbo yellow LED for warning jumbo red LED for alarm
Alarm indications	jumbo red LED and audible alarm (85 dB @ 4" [10 cm])	jumbo red LED and audible alarm (85 dB @ 4" [10 cm])
High flow alarm disable	yes	n/a
Horn silence	temporary and permanent	temporary and permanent
Mounting	flush or kit	flush or kit
Cable length	10 ft (3 m)	10 ft (3 m)
Calibration	single point field calibration (recommended)	low alarm set point
Operating temperature	50-95°F (10-35°C)	50-95°F (10-35°C)
Storage temperature	-40-150°F (-40-65°C)	-40-150°F (-40-65°C)
Power requirement	9-30V AC/DC	9-30V AC/DC
Instrument dimensions front face plate	5.25" x 3.0" x 0.625" (13.3 cm x 7.62 cm x 1.59 cm)	5.25" x 3.0" x 0.625" (13.3 cm x 7.62 cm x 1.59 cm)
rear enclosure	3.0" x 2.0" x 0.5" (7.62 cm x 5.08 cm x 1.27 cm)	3.0" x 2.0" x 0.5" (7.62 cm x 5.08 cm x 1.27 cm)
Accuracy	±5% of reading or 5 fpm, whichever is greater	±5% of set point
Agency listings	CE	CE

Specifications subject to change without notice.

AirGard, Alnor, TSI, and the TSI logo are registered trademarks of TSI Incorporated.

Model 315-BSC



**Alnor Products, TSI Incorporated**

Visit our website at [www.alnor.com](http://www.alnor.com) for more information.

**USA**  
**India**

**Tel:** +1 800 874 2811  
**Tel:** +91 80 67877200

**China**  
**Singapore**

**Tel:** +86 10 8219 7688  
**Tel:** +65 6595 6388