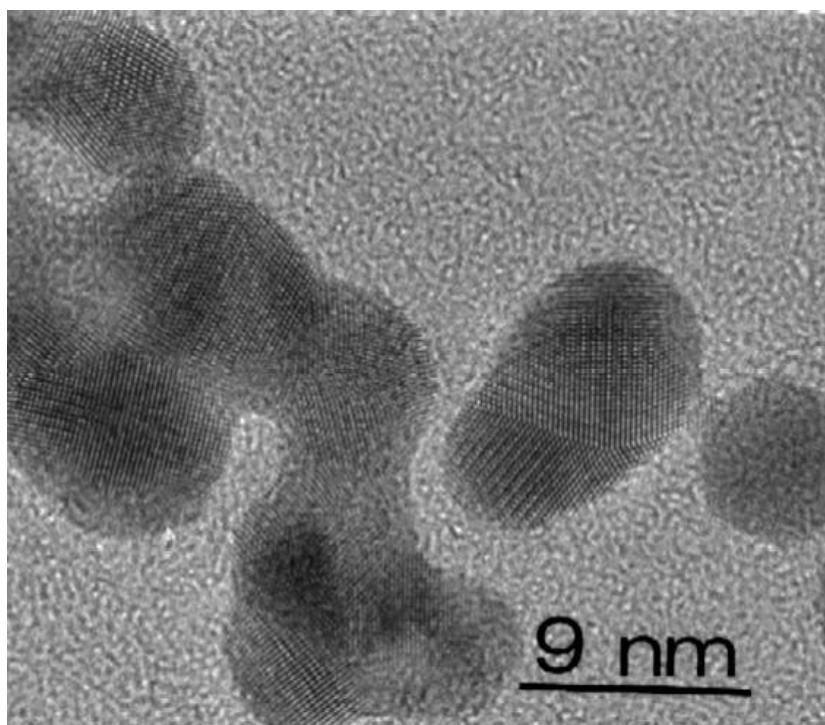


## Fine Gold Particles on Carbon Film

AGS132



The gold particles on this carbon film have a size distribution which is nominally in the range 2nm to 9nm. The smallest particles are less suitable for high resolution tests than the larger ones. It appears that the larger particles often join together and produce the morphological effect seen in the above micrograph.

Since the thickness of these particular crystals is highly suitable for stronger diffraction, these are the particles that should be used in the first instance.